

Client:
Atul B. Kothari CPA, LLC
-Home of Comprehensive Paperless Bookkeeping -
3300 S Gessner Road, Suite 249
Houston, TX 77063
713-785-5000 - Voice
713-962-0952 - Mobile

ARCHITECT:
Tarik K. Chaudhuri, AIA, CCIM
Archicon Services, Inc.
12111 Gladwick Drive, Houston, TX 77077
Phone: (281) 870-8581
Fax: (713) 467-6226
tarik@archiconservices.com
www.archiconservices.com

STRUCTURAL ENGINEER:
Yogi Sharma, P.E.
Concept Engineers, Inc.
2550 North Loop West, Suite 200
Houston, TX 77092
Phone 713.552.9200
Fax 713.552.9229
ysharma@conceptengrs.com
www.conceptengrs.com

MEP ENGINEER:
PETER TIAN, P.E., Ph.D.
TRINITY CONSULTING GROUP, INC.
FIRM REGISTRATION NO. F-11686

CIVIL ENGINEER:
HEIGHTS ENGINEERING LLC
12603 SOUTHWEST FWY, STE 285
STAFFORD, TX 77477
PHONE: (832)999-4764
FAX: (281)274-9153
www.HEIGHTSENGINEERING.com



-REVISIONS-	
DATE	ISSUED FOR
04/19/2017	R1 - CITY COMMENTS

SHEET TITLE
EXTERIOR ELEVATIONS

KOTHARI OFFICE BUILDING PROJECT
323 DULLES AVE.
STAFFORD, TX 77477

PROJECT NO.: AR.1701
DRAWN BY:
CHKD. BY:
DATE: 04/23/2017
SHEET NO.
R1

KEYED NOTES:

- N01 SINGLE PLY ROOFING SYSTEM AS MANUFACTURED BY CARLISLE. SINGLE PLY ROOFING IS APPLIED OVER INSULFOAM (R-29). ROOF SLOPE IS CREATED BY INSULFOAM
- N02 WOODEN TRUSS, RE: STRUCTURAL. DEPTH OF TRUSS 2'-0"
- N03 GALV. METAL FLASHING FIXED OVER, 1X6 WOODEN BLOCKING WITH SAW CUT SLOPE ON TOP OF PARAPET, CONTINUOUS
- N04 CONTINUOUS WOODEN BLOCKING AS REQUIRED, RE: STRUCTURAL
- N05 PROJECTED ALUMINIUM CANOPY SYSTEM, REFER TO STRUCTURAL DRAWINGS FOR FRAMING DETAILS
- N06 THERMALLY BROKEN STORE FRONT GLAZING SYSTEM WITH HIGH PERFORMANCE LOW E-INSULATED GLAZING UNITS
- N07 INTERIOR GLAZING SYSTEM WITH/WITHOUT DOOR ASSEMBLY AS SCHEDULED
- N08 6" HIGH WOODEN BASE, PAINTED
- N09 DBL. WOOD PLATE AT BASE FIXED WITH GRADE BEAM/SLAB WITH ANCHOR BOLT.
- N10 UNDERSLAB AIR/VAPOR RETRADER, AS PER ENGG. SPECIFICATION
- N11 WOODEN HEADER AS REQUIRED
- N12 CABINETRY & WOODEN MILL WORK, AS DESIGNED BY ARCHITECT. RE: DETAILS
- N13 CONTINUOUS FIRE BLOCKING AS REQUIRED
- N14 5/8" GYP. BOARD FALSE CEILING, SUSPENDED BY GALV. STEEL CHANELS, WIRES AND CLIPS FROM STRUCTURAL CEILING
- N15 R 30 BATT INSULATION
- N16 SURFACE CONTROL JOINTS, PROPERLY TREATED AND AV INSULATED
- N17 SCHEDULED WALL FINISH - WALL TILES
- N18 SCHEDULED FLOOR FINISH, RE: SHEET NO. - A402
- N19 CONSTRUCTION JOINTS FILLED WITH WEATHER PROOF EXTERIOR GRADE SELANT
- N20 4" DIA. RAIN WATER SPOUT AS DIRECTED BY ARCHITECT
- N21 INSULATION BOARD NOT LESS THAN 2 1/2" AND CUT SLOPE AS INDICATED ON ROOF PLAN
- N22 R.C.C. GRADE SLAB, AS DESIGNED BY STR. ENGG.
- N23 TREATED 1/2" PLYWOOD BASE UNDER LAID BY SCHEDULED FLOORING
- N24 FRICTION GROOVES CREATED IN RAMP GRANITE SLABS @ 3" O.C. TO INCREASE GREATER FRICTIONAL FORCE WHILE MOVEMENT
- N25 SEMI RECESSED WALL MOUNTED FIRE EXTINGUISHER
- N26 FURNISHING SHOWN IS BUY OUT ITEMS, AS SELECTED BY OWNER'S. THESE ARE NOR PAT OF CONSTRUCTION OR CONTRACTOR'S SCOPE
- N27 60" HIGH ACOUSTICAL MOVABLE PARTITION WALLS WITH MODULAR FURNITURE SETTINGS TO CHOOSE BY OWNERS, NOT PART IN CONTRACTOR'S SCOPE
- N28 R-19 BATT INSULATION
- N29 APB WOODEN BEAM, AS SHOWN IN STRUCTURAL DRAWING
- N30 3/4" THICK EXTERIOR GRADE STRUCTURAL PLYWOOD SHEATING FIXED OVER WOODEN STUD WALL
- N31 STEEL "I" BAM AS DESIGNED BY STRUCTURAL ENGINEER

NOTE:
STUCCO COVERAGE IS 100% IN ALL EXTERIOR WALL FINISHES WITHOUT ANY WOOD SIDING

WALL ASSEMBLY:

- WE1 EXTERNAL WALL ASSEMBLY: 3/4" SHEATHING FIXED ON EXTERNAL SIDE OF 2X6 WOODEN STUD @ 16" O.C. WITH R 19 BATT INSULATION INFILL
- WE2 EXTERNAL WALL ASSEMBLY: 3/4" SHEATHING ON BOTH SIDES OF 2X6 WOODEN STUD @ 16" O.C. WITH R 19 BATT INSULATION INFILL
- WI1 INTERNAL WALL ASSEMBLY: 2X4 WOODEN STUD @ 16" O.C.

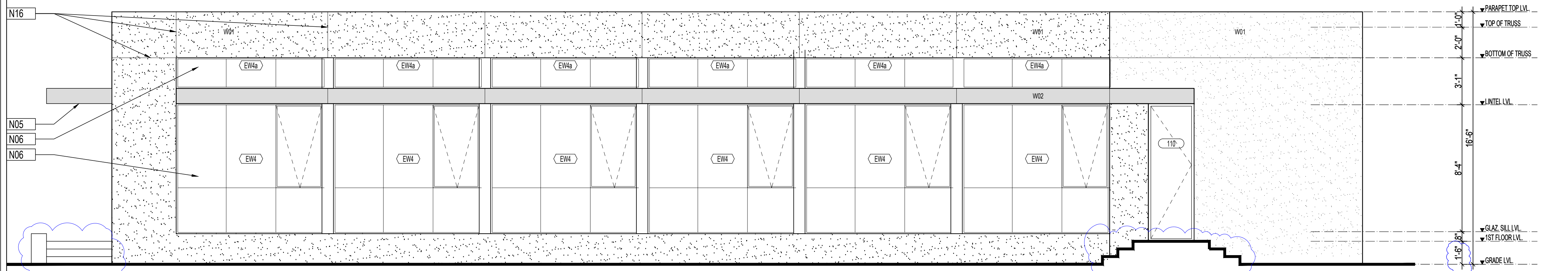
SCHEDULE OF FINISHES:

- F01 COMMERCIAL GRADE CARPET
COLOR: LIGHTER SHADES
- F02 COMMERCIAL GRADE CARPET
COLOR: DARKER SHADES
- F03 12"x12" OR 8"x8" PORCELAIN FLOOR TILES AS SELECTED BY OWNER
- F04 POLISHED GRANITE FLOORING
POLISHED GRANITE SLABS LAID OVER BASE WITH CEMENT MORTAR

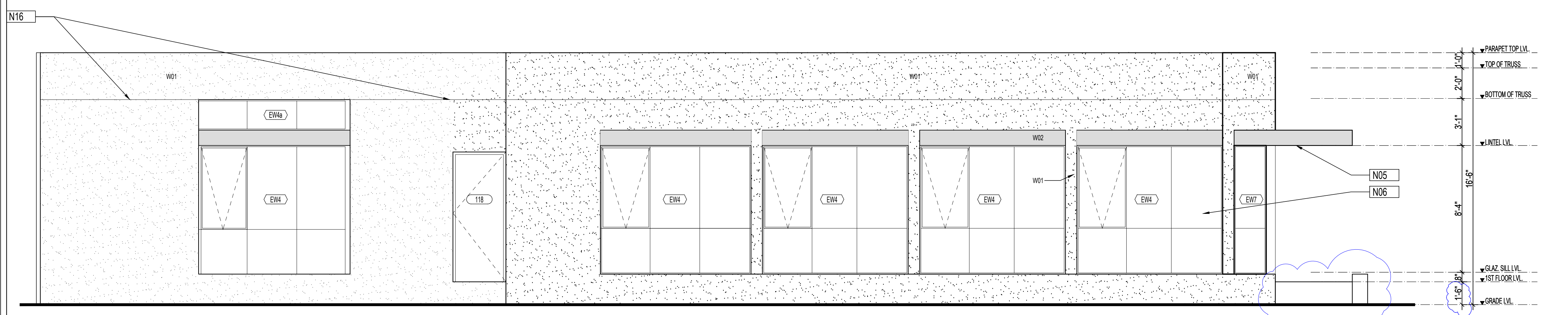
- PT1 5/8" THICK GYP. BOARD SURFACE WITH INTERIOR GRADE PAINT FINISH AS DIRECTED BY ARCHITECT
- CB1 WOODEN CABINETRY
- WD1 WOODEN MILLWORK - PARTITION WALLS ETC.
- N06 THERMALLY BROKEN STORE FRONT GLAZING SYSTEM WITH HIGH PERFORMANCE LOW E-INSULATED GLAZING UNITS
- N07 INTERIOR GLAZING SYSTEM AS SCHEDULED
- PW1 PORCELAIN WALL TILES

- W01 EXTERNAL WALL FINISH: 1/8" THICK FINISHED COAT OF STUCCO, APPLIED OVER 3/8" THICK BROWN COAT OF STUCCO APPLIED OVER 3/8" THICK BASE OR SCRATCH COAT OF STUCCO OVER GALV. SELF-FIRRING METAL MESH FIXED OVER WEATHER BARRIER
- W02 PDVF COATED ALUMINIUM SHEATING / CLADDING FIXED OVER FRAME WORK, AS DESIGNED BY MANUFACTURER

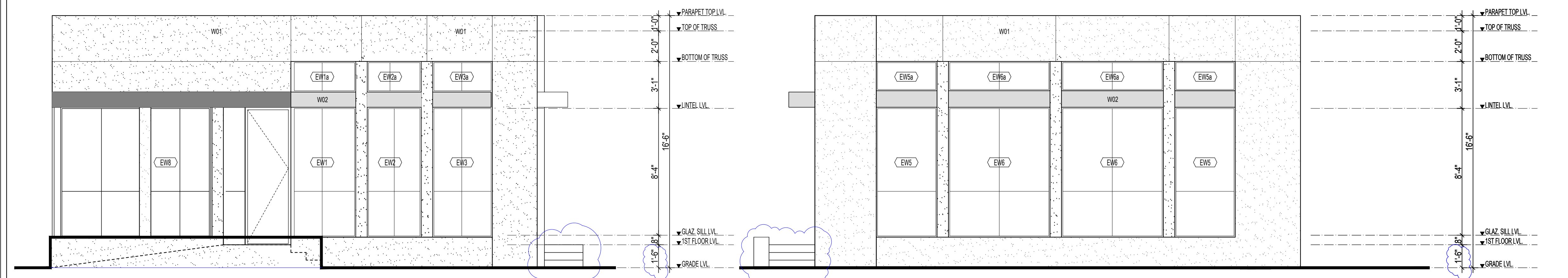
- C01 5/8" GYP. BOARD CEILING SUSPENDED WITH GALV. METAL CLIPS & WIRES WITH INTERIOR GRADE PAINT FINISH ON TOP
- C02 ACOUSTICAL TILE & GRID CEILING, SIZE 2'X2'
- C03 FIRE PROOF ARMSTRONG GRID CEILING
- C05 ALUMINIUM CEILING
- C06 2'X2' GYPSUM BOARD GRID CEILING
- B01 PAINTED WOODEN BASE, 6" HIGH
- B02 SCRATCH PROOF CONTINUOUS ALUMINIUM BASE / SKIRTING
- B03 HARD RUBBER BASE
- X01 RUBBER TILE / CARPET JOINER



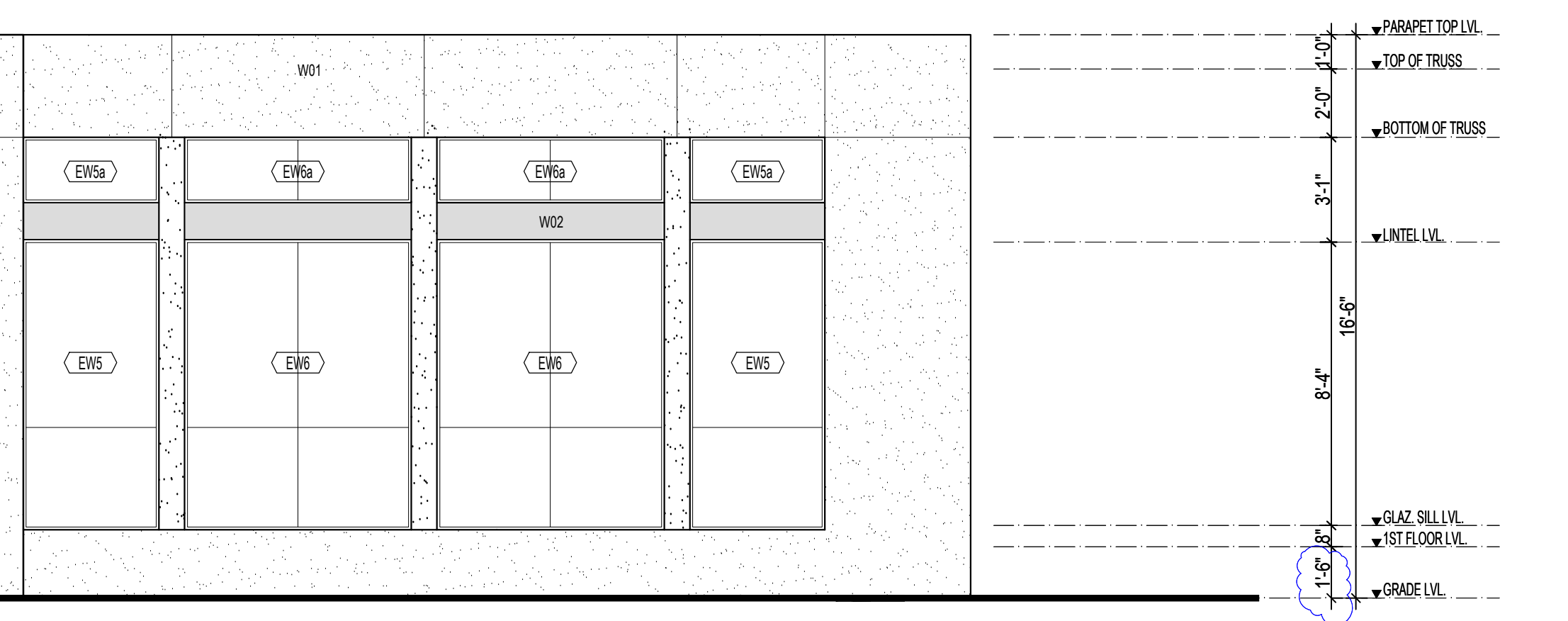
01 EXTERIOR ELEVATION
SCALE 1/4"=1'-0"



02 EXTERIOR ELEVATION
SCALE 1/4"=1'-0"



03 EXTERIOR ELEVATION
SCALE 1/4"=1'-0"



04 EXTERIOR ELEVATION
SCALE 1/4"=1'-0"

: FLOOR:
: WALLS/INT.:
: WALLS/EXT.:
: CEILING:
: BASE / SKIRTING/OTHERS: