



Client:
Atul B. Kothari CPA, LLC
-Home of Comprehensive Paperless
Bookkeeping -
3300 S Gessner Road, Suite 249
Houston, TX 77063
713-785-5900 - Voice
713-962-0952 - Mobile

ARCHITECT:
Tarit K. Chaudhuri, AIA, CCIM
Archicon Services, Inc.
12111 Gladwick Drive, Houston,
TX 77077
Phone: (281) 870-8581
Fax: (713) 467-6226
tarit@archiconservices.com
www.archiconservices.com

STRUCTURAL ENGINEER:
Yogi Sharma, P.E.
Concept Engineers, Inc.
2550 North Loop West, Suite 200
Houston, TX 77092
Phone 713.552.9200
Fax 713.552.9229
ysharma@conceptengrs.com
www.conceptengrs.com

MEP ENGINEER:
PETER TIAN, P.E., Ph.D.
TRINITY CONSULTING GROUP, INC.
FIRM REGISTRATION NO. F-11686

CIVIL ENGINEER:
HEIGHTS ENGINEERING LLC.
12603 SOUTHWEST FWY, STE 285
STAFFORD, TX 77477,
PHONE: (832)999-4764
FAX: (281)274-9153
www.HEIGHTSENGINEERING.com

ARCHITECT'S SEAL



-REVISIONS-	
DATE	ISSUED FOR
04/19/2017	R1 - CITY COMMENTS

SHEET TITLE
WALL SECTIONS

**KOTHARI OFFICE
BUILDING PROJECT**
323 DULLES AVE.
STAFFORD, TX 77477

PROJECT NO.: AR.1701

DRAWN BY:

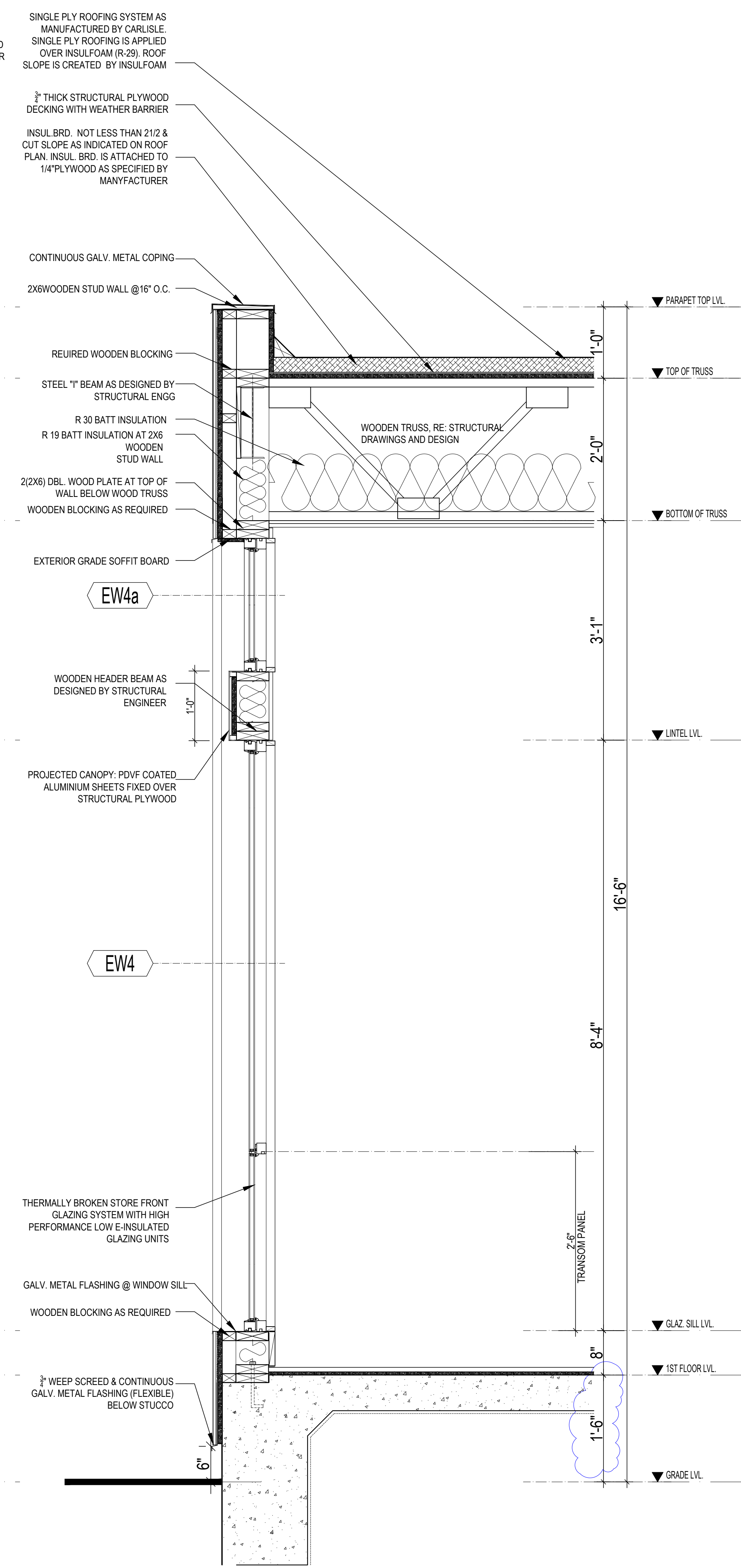
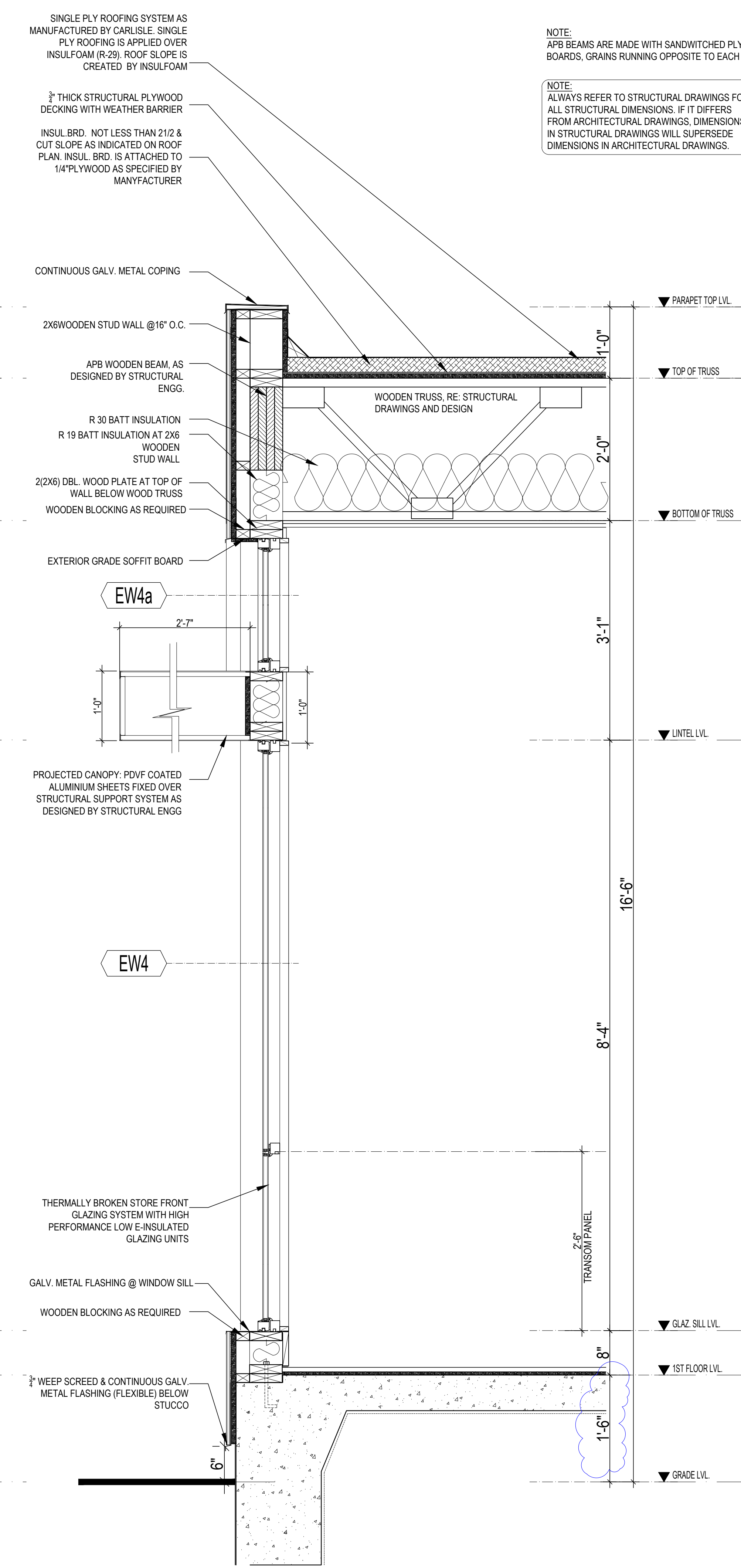
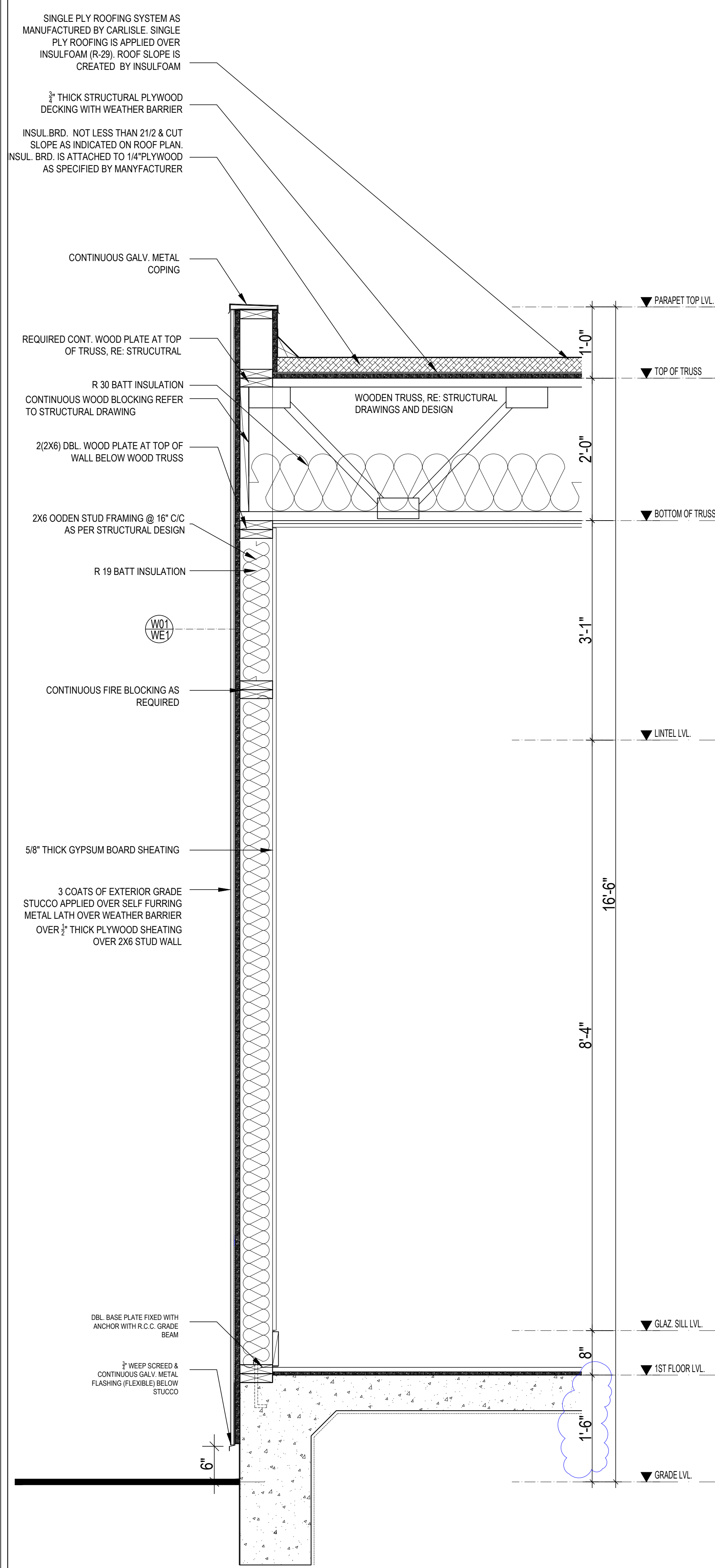
CHKD. BY:

DATE: 04/23/2017

SHEET NO.

R1

A302



NOTE:
APB BEAMS ARE MADE WITH SANDWICHED PLYWOOD BOARDS, GRAINS RUNNING OPPOSITE TO EACH OTHER

NOTE:
ALWAYS REFER TO STRUCTURAL DRAWINGS FOR ALL STRUCTURAL DIMENSIONS. IF IT DIFFERS FROM ARCHITECTURAL DRAWINGS, DIMENSIONS IN STRUCTURAL DRAWINGS WILL SUPERSEDE DIMENSIONS IN ARCHITECTURAL DRAWINGS.